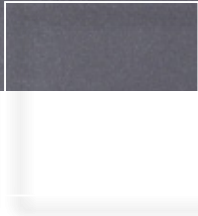
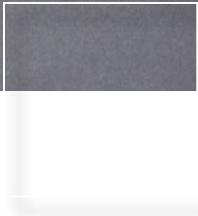


TASKALFA 180 - MONOCHROME DIGITAL DEVICE

TASKALFA 180 - MONOCHROME DIGITAL DEVICE



THE COMPACT WORKGROUP DEVICE.

Designed for superb ease of use, the TASKalfa 180 copier will help to speed up your office workflow. From the design of the cassette grip all the way up to the intuitive layout of the control panel. This compact copier is easy to operate, while delivering the professional quality that your business demands.

- Up to 18 pages A4 and 8 pages A3 per minute
- Time to first copy 5.7 seconds or less
- Optional duplex unit for cost-saving double-sided printing
- Optional 50-sheet reversing document processor for effortless copying of double-sided originals
- 600 dpi laser technology with 256 greyscale copying for crisp text and realistic photos
- 400-sheet standard paper capacity (expandable to 1,300 sheets)
- Optional GDI printer
- Long-life components provide exceptional efficiency and reliability



TASKalfa 

 **KYOCERA**
we'll save you the Earth

TASKalfa 180

MONOCHROME DIGITAL DEVICE



The TASKalfa 180 incorporates extremely durable components that guarantee a efficient and reliable operation to meet the demanding requirements of busy office environments. This device provides long hardware maintenance cycles that keep your overall operating costs low and productivity high – whilst ensuring a minimum impact on the environment.

General

Technology

KYOCERA Laser, Mono component

Engine speed

Max.18/8 pages per minute A4/A3

Resolution

600 x 600 dpi, 256 greyscale

Warm-up time

17.2 seconds or less from power on

Time to first copy

5.7 seconds or less

Dimensions (W x D x H)

568 x 546 x 502 mm

Weight

Main unit: approx. 33 kg

Power source

AC 220 ~ 240 V, 50/60 Hz

Power consumption

Printing: 424 W – Stand-by: 60 W –

Sleepmode: 2.6 W

Safety standards

GS, TÜV, CE

This unit is manufactured according to ISO 9001 quality standard and ISO 14001 environmental standard.

Paper handling

All paper capacities quoted are based on a paper thickness of max. 0.11 mm. Please use paper recommended by KYOCERA under normal environmental conditions.

Input capacity

300-sheet universal paper cassette, 64–105 g/m², A3, A4,

A5, Ledger, Letter, Legal, Folio

100-sheet multi-purpose tray, 45–160 g/m², A3, A4, A5,

A6, Ledger, Letter, Legal, Folio, Custom (98 x 148 mm to

297 x 432 mm)

Max. input capacity with options: 1,300 sheets

Output capacity

250 sheets face-down

Copy functions

Max. original size

A3

Continuous copying

1–999

Memory capacity

Standard 32 MB, max. 160 MB

Zoom range

25–400 % in 1 % steps

Exposure mode

Auto, manual: 5 or 9 steps

Image adjustments

Text + photo, text, photo

Digital features

Scan-once-print-many, electronic sort copy, rotate sort copy*, automatic paper selection, duplex copying**, combined inch/metric copying, layout mode (2-in-1, 4-in-1), ECOcopy mode, program key mode, management mode

*Additional paper feeder PF-420 is required

**Additional duplex unit DU-420 is required

Print functions (optional)

CPU ARM 946-S 150MHz, Flex R15C

Memory

Standard max. 32 MB

Emulations

Host based printing system for all current windows operating systems

Standard Interface

USB 2.0 (Hi-speed)

Consumables

TK-439 Toner-kit

Microfine toner for 15,000 pages with 6 % A4 coverage

Capacity of starter toner for 3,000 pages with 6 % A4 coverage

Options

Printing System (Z)

Paper handling

DP-420 Reversing document processor:

50 sheets, duplex scan, 45–160 g/m², A3-A5R, Folio, Ledger-Statement-R

PF-420 Paper feeder:

300 sheets, 64–105 g/m², A3-A5R, Folio, Ledger-Statement-R (max. three PF-420 can be added to the basis-system)

DU-420 Duplex unit:

64–105 g/m², A3-A5R, Folio, Ledger-Statement-R

Copy memory

DIMM memory: 1 additional slot for 16 MB, 32 MB, 64 MB, 128 MB (max. 160 MB)

Optional interface

IB-110: external network print server

Others

Platen cover (E)

Cabinet: metal with storage capacity

including castors

Cabinet for 1 Draw Configuration

Cabinet for 2 Draw Configuration

Cabinet for 3 Draw Configuration

Pedestal for 4 Draw Configuration



Product depicted includes optional extras.

*Kyocera does not warrant that any specifications mentioned will be error-free. Specifications are subject to change without notice. Information is correct at time of going to press. All other brand and product names may be registered trademarks or trademarks of their respective holders and are hereby acknowledged.

Printed on Nordset, an environmentally responsible paper manufactured using Elemental Chlorine Free (ECF) pulp sourced from third party certified, well managed forests. Produced by Nordland Papier, a company certified under ISO14001 environmental management systems and registered under the EU Eco-management and Audit Scheme EMAS (Reg. No.D - 162 - 00007).

KYOCERA MITA Australia

Ph: 13 KYOCERA

www.kyoceramita.com.au

KYOCERA MITA Australia Pty Ltd ABN 77 003 852 444

KYOCERA MITA New Zealand

Ph: 0508 KYOCERA

www.kyoceramita.co.nz



we'll save you the Earth