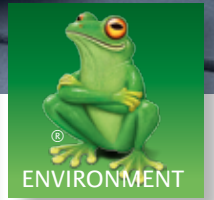
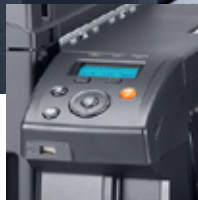
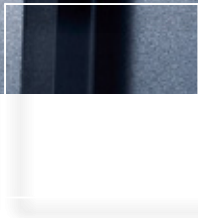
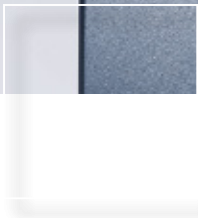


FS-C8500DN

COLOUR PRINTER FOR A3 AND A4 FORMATS

FS-C8500DN



THE HIGHLY PRODUCTIVE PRINTER FOR COLOUR IN A3.

The FS-C8500DN is a high performance printer that delivers outstanding colour and monochrome print outs at impressive speeds in both A4 and A3. The FS-C8500DN is built using Kyocera's unique long-life components, delivering excellent reliability and low running costs. And with the wide range of paper handling and finishing options, the FS-C8500DN is ideal for professional, large volume office use or in-house production.

- Up to 50/55 pages per minute A4 in colour and b/w
- Up to 9,600 x 600 dpi printing quality with Multi-Bit Technology
- Standard duplex unit for double-sided printing
- Standard USB and Network Connectivity
- Amazing 300,000 page drum life
- Outstanding finishing options for flexibility and volumes
- Exceptionally low printing costs in its class



we'll save you the Earth

FS-C8500DN

COLOUR PRINTER FOR A3 AND A4 FORMATS

The FS-C8500DN includes:

PRESCRIBE IIc

With the KYOCERA page design and control language PRESCRIBE IIc, even complex graphics, logos and forms (multipart forms) can be created independently on the system and saved and updated in the printer. Consequently, integration into print files no longer applies. They are only accessed as required and therefore relieve the load on the network.

The KM NetViewer

The KM NetViewer enables complete monitoring and control of all ECOSYS printers and digital KYOCERA multifunction units from any Windows® PC and thus provides ideal network administration. It also supports the standardised SNMP protocol.

Status Monitor and Command Centre

The Status Monitor shows the current printers condition and gives direct access to the Command Center for the modification of settings that are not contained in the drivers (e.g. network settings, adjustment of sleep mode or blocking of the control panel).

USB Host Interface for USB Flash Memory

PDF files can be printed directly from a USB Flash Memory (e.g. USB stick) via the USB host interface. Documents are selected directly via the printer's control panel. No computer is required.

Our Unique Printing Technology
ECOSYS stands for ECOLOGY, ECONomy and SYStem-printing. With their long-life components, ECOSYS devices are designed to maximise durability and minimise the total cost of ownership with regard to maintenance, administration and consumables. The cartridge-free system means that only the toner has to be replaced regularly, and the drum units every 300,000 pages. The modular design concept allows you to add workflow-enhancing functions as required. Integrated system software provides long-term cross-network compatibility. KYOCERA's long-life components cost you and the environment less.

General

Technology

Kyocera ECOSYS Colour Laser Printer

Engine speed

Up to 50/25 pages per minute A4/A3 in colour
Up to 55/28 pages per minute A4/A3 in b/w

Resolution

600 x 600 dpi
Multi-Bit Technology for print quality of up to 9,600 x 600 dpi

Duty cycle

Max. 150,000 pages per month (A4)

Warm-up time

Approx. 57.5 seconds or less from sleep mode

Time to first page

Approx. 5.2 seconds or less in b/w
Approx. 6.7 seconds or less in colour

Dimensions (W x D x H)

605 mm x 680 mm x 691 mm

Weight

Approx. 99 kg (basic unit ready for operation)

Power source

220/240 V, 50/60 Hz

Power consumption

Printing: 1,250 W in b/w, 1,270 W in colour
Stand-by: 200 W
Power-Saving: 15 W

Safety standards

GS, TUV, CE
This unit is manufactured according to ISO 9001 quality standard and ISO 14001 environmental standard.

Paper handling

All paper capacities quote are based on 80gsm paper, thickness of max 0.11mm. Please use paper recommended by Kyocera under normal environmental conditions.

Input capacity

100-sheet multi-purpose tray, 60–220 g/m², A3–A6R, 2 x 500 sheet universal paper cassette, 60–220 g/m²A3–A5R (over A4 size up to 250 sheets in 1. paper cassette)
Max. input capacity with options: 4,100 sheets A4

Duplex unit

Double-side printing: 60–220 g/m²; A3, A4, A5, B5, Letter, Legal, Custom

Output capacity

Standard 500-sheet face down with paper full sensor
Max: 3,500 sheets using main unit body and DF-760(B)

Controller

CPU:

PowerPC 750GL/750 MHz

Memory:

1,024MB RAM, can be increased to 2,048MB RAM (single DIMM slot) as an option

Hard Disk

Standard 160GB HDD

Standard interface

USB 2.0 (Hi-Speed), 2 x USB Host Interfaces dedicated for USB Flash Memory device, Fast Ethernet (10/100 Base-TX for IPv4/IPv6)

Controller language: PRESCRIBE

Emulations: PCL6, PCL5c, PostScript® 3 (KPLD 3), XPS Direct Print, PDF Direct Print, with automatic emulation sensing

Operating systems

All current Windows operating systems, Mac OS X Version 10.2 or higher, UNIX, LINUX as well as other operating systems

Fonts / barcodes

93 scalable fonts for PCL, 136 scalable fonts for PostScript®, 8 fonts for Windows Vista®, 1 Bitmap font, 45 barcodes (e.g. EAN8, EAN13, EAN128) with automatic generation of checksums as well as support of two-dimensional barcodes PDF-417 under PRESCRIBE (PCL and other barcodes available as an option)

Integrated accounting

100 department codes

Consumables

TK-884K Toner-Kit

Micro-Particle toner black for 25,000 pages A4 in accordance with ISO/IEC 19798

TK-884C, TK-884M, TK-884Y Toner-kits

Micro-Particle toner cyan, magenta, yellow for 18,000 pages A4 in accordance with ISO/IEC 19798

Capacity of starter toner is black 12,500 pages, and cyan, magenta, yellow is 9,000 pages each in accordance with ISO/IEC 19798

Maintenance Kit A

MK-880A Installed every 300,000 pages

Maintenance Kit B

MK-856B Installed every 300,000 pages

Options

Paper handling

PF-720(B) Paper feeder Max. 2 x 500 sheets, 60–163 g/m², A5R–A3, folio

PF-760(B) Paper feeder Max. 3,000 sheets, 60–105 g/m², A4, B5, letter

Max. 1 x PF-760(B) feeder combined with the standard 1,000 sheet input, for a total of 4,100 sheet input

DF-760(B)* Document finisher + AK-720 Adapter-Kit

Main tray: max. 3,000 sheets A4; 60–220 g/m²; A3–B5
Sub tray: max. 200 sheets A4; 60–163 g/m²; A3–A6R
Sub tray (top) max. 50 sheets; 60–163 g/m²; A4
Stapling up to 50 sheets A4 or 30 sheets A3 at 3 positions, A3–B5

PH-5C Punch unit for DF-760(B)

2-hole/4-hole, 60–200 g/m², A5R–A3

MT-720(B) Mailbox sorter for DF-760(B)

7 bins x max. 100 sheets A4, 50 sheets A3/B4, 60–163 g/m²

BF-720 Booklet unit for DF-760(B)

Max. 64 pages (16 sheets) booklet folding and stapling
60–105 g/m², A3, B4, A4R, cover sheet 60–220 g/m² (simplex)

DF-780(B)* Document finisher

Max. 1,000 sheets A4, A3–B5E, 64–105 g/m², 3 positions-stapling up to 50 sheets A4 or 20 sheets A3
* AK-725 Adapter Kit for paper path is required for the use of DF-760(B), DF-780(B). Transfers paper from printer to finisher A3–A5R (60–220 g/m²)

Memory upgrade

DIMM-1GBSP: 1,024MB
1 slot available for memory upgrade

CompactFlash*-Card

1 slot (up to 4 GB) for printing forms, fonts, logos, macro storage

USB Flash Memory

Supports direct printing of PDF, XPS, TIFF, JPEG files via USB Host Interface

Data security kit (E) with security level EAL3

Cabinet 1557: for 2 tray configuration

Warranty

2-year warranty as standard. Kyocera guarantees the drums and developers for 2 years or maximum 300,000 pages (whichever occurs sooner), provided the printer is used and cleaned in accordance with the service instructions.



*Kyocera does not warrant that any specifications mentioned will be error-free. Specifications are subject to change without notice. Information is correct at time of going to press. All other brand and product names may be registered trademarks or trademarks of their respective holders and are hereby acknowledged. Product pictures shown on this brochure include optional extras.

KYOCERA MITA Australia
Ph: 13 KYOCERA
www.kyoceramita.com.au

KYOCERA MITA Australia Pty Ltd ABN 77 003 852 444

KYOCERA MITA New Zealand
Ph: 0508 KYOCERA
www.kyoceramita.co.nz

 **KYOCERA**
we'll save you the Earth