

FS-C2126MFP+ / FS-C2026MFP+

COLOUR MULTIFUNCTIONALS FOR A4 FORMAT

The FS-C2126MFP+ / FS-C2026MFP+ Includes:

PRESCRIBE IIc

With the KYOCERA page design and control language PRESCRIBE IIc, even complex graphics, logos and forms (multipart forms) can be created independently on the system and saved and updated in the printer. Consequently, integration into print files no longer applies. They are only accessed as required and therefore relieve the load on the network.

The KM NetViewer

The KM NetViewer enables complete monitoring and control of all ECOSYS printers and digital KYOCERA multifunction units from any Windows® PC and thus provides ideal network administration. It also supports the standardised SNMP protocol.

Status Monitor and Command Centre

The Status Monitor shows the current printers condition and gives direct access to the Command Center for the modification of settings that are not contained in the drivers (e.g. network settings, adjustment of sleep mode or blocking of the control panel).

USB Host Interface for USB Flash Memory

PDF files can be printed directly from a USB Flash Memory (e.g. USB stick) via the USB host interface. Documents are selected directly via the printer's control panel. No computer is required.

For PRESCRIBE IIc compatibility, please call 13 KYOCERA (AUST) or 0508 KYOCERA (NZ).

Our Unique Printing Technology

ECOSYS stands for ECOlogy, ECONomy and SYStem-printing. With their long-life components, ECOSYS devices are designed to maximise durability and minimise the total cost of ownership with regard to maintenance, administration and consumables. The cartridge-free system means that only the toner has to be replaced regularly, and the drum units every 200,000 pages. The modular design concept allows you to add workflow enhancing functions as required. Integrated system software provides long-term cross-network compatibility. KYOCERA's long-life components cost you and the environment less.

General

Technology

Kyocera ECOSYS Colour Laser

Engine speed

Up to 26 pages per minute A4 in Colour and Mono

Resolution

600 x 600 dpi
Multi-Bit Technology for print quality of up to 9,600 x 600 dpi

Duty cycle

Max. 65,000 pages per month

Warm-up time

Approx. 29 seconds or less from power on
20 seconds from sleep mode

Time to first print

Approx. 10.5 seconds or less in Colour
Approx. 9 seconds or less in Monochrome

Time to first copy

Approx. 12 seconds or less in Colour
Approx. 10.5 seconds or less in Monochrome

CPU: PowerPC 464 / 667 MHz

Memory: 768 MB RAM, can be increased to 1,792MB RAM (single DIMM slot as an option) ^

Standard interface: Fast Ethernet 10/100Base-TX for IPv4/IPv6, USB 2.0 (Hi-Speed), USB Host interface dedicated for USB flash Memory device

Integrated accounting: 20 department codes

Dimensions (W x D x H): 514 x 550 x 580 mm

Weight: Approx. 36.5 kg

Power source: AC 220 - 240 V , 50/60 Hz

Power consumption

Printing (FS-C2126MFP+/FS-C2026MFP+): 477W / 466W
Copying (FS-C2126MFP+/FS-C2026MFP+): 479W / 470W
Stand-by (FS-C2126MFP+/FS-C2026MFP+): 79W / 79W
Sleep (FS-C2126MFP+/FS-C2026MFP+): 17W / 16W

Safety standards

TUV/GS, CE
This unit is manufactured according to ISO 9001 quality standard and ISO 14001 environmental standard.

Paper handling

All paper capacities quote are based on 80gsm paper, thickness of max 0.11mm. Please use paper recommended by Kyocera under normal environmental conditions.

Input capacity

50-sheet multi-purpose tray, 60-220 g/m², A4, B5, A5, A6 Letter, Legal, Folio, Envelopes, Custom (70 x 148 to 216 x 356 mm)
250-sheet universal paper cassette, 60-163 g/m², A4, A5, B5, A6, Letter, Legal, Folio, Custom (105 x 148 to 216 x 356 mm)

Max. input capacity with options: 1,300 sheets

Duplex unit

Duplex as standard supports 60-163 g/m², A4, A5, B5, Letter, Legal, Custom (105 x 148 mm to 216 x 356 mm)

Reverse Automatic Document Feeder (RADF)

50-sheet, Simplex scan 50-120 g/m², Duplex scan 50-110 g/m², custom (140 x 210 to 216 x 356 mm)

Output capacity

250 sheets face-down

Print functions

Controller language: PRESCRIBE IIc

Emulations: PCL 6 (5e/XL), KPDL 3 (PostScript 3-compatible), Line Printer, IBM Proprinter X24E, Epson L Q-850, Diablo 630, Prescribe, XPS, PDF Direct Print

Operating systems

All current Windows operating systems, MAC OS 9.X, MAC OS X, Linux, as well as other operating systems on request

Fonts / barcodes

93 outline fonts (PCL 6, HP compatible) + 8 (Windows Vista), 93 (KPDL3), 1 bitmap font, 45 types of one-dimensional barcodes, 1 type of two-dimensional barcode (PDF417)

Features

PDF Direct Print, IPP printing, e-mail printing, WSD print, secure printing via SSL, IPsec, SNMPv3

Copy functions

Max. original size: A4 / Letter

Continuous copying: 1-999

Zoom range: 25-400% in 1% steps

Preset magnification ratios

7 Reductions / 5 Enlargements (7R/5E)

Digital features

Scan-once-copy-many, electronic sort, 2in1, 4in1, ID-card copy, job reserve, priority print, program, auto duplex copy, split copy, continuous scan, auto cassette change, copy density control

Exposure mode: Auto, manual: 7 steps

Image adjustments: Text + photo, text, photo

Scan functions

Functionality

Scan-to-Email, Scan-to-FTP, Scan-to-SMB, Scan to USB Host, TWAIN, WSD

Scan speed:

35 ipm (300 dpi, A4, Mono) 25ipm (300 dpi, A4, Colour)

Scan resolution: 600, 400, 300, 200 dpi (256 greyscales)

Max. scan size: A4, legal

Original recognition: Text, photo, text + photo OCR

Network protocol: TCP /IP , NetWare, AppleTalk, NetBEUI

File types: TIFF, PDF, PDF/A, JPEG, XPS

Compression method: MMR/JPEG

Features

Colour scan, Integrated address book, LDAP support, Encrypted data transfer, multi-send (e-mail, fax, SMB/FTP folder, print) at once

Operating systems

All current Windows operating systems, MAC OS 9.X, MAC OS X, Linux, as well as other operating systems on request

Fax functions (FS-C2126MFP+ only)

Compatibility: ITU -T G 3

Modem speed: Max. 33.6 kbps

Transmission speed: 3 seconds or less

Scanning speed: 2.5 seconds or less

One touch dial: 22 numbers

Address book: 100 entries

Scanning density

Normal: 8 dot/mm x 3.85 line/mm

Fine: 8 dot/mm x 7.7 line/mm

Superfine: 8 dot/mm x 15.4 line/mm

Ultrafine: 16 dot/mm x 15.4 line/mm

Maximum original size: A4, legal

Compression method: JBIG , MMR, MR, MH

Memory reception: 256 sheets or more

Features

Network fax, duplex transmission and reception, encrypted transmission and reception, polling transmission and reception, broadcast, remote diagnosis

Consumables

TK-594K Toner-Kit

Micro-Particle toner black for 7,000 pages A4 in accordance with ISO/IEC 19798

TK-594C, TK-594M, TK-594Y Toner-Kits

Micro-Particle toner cyan, magenta, yellow for 5,000 pages A4 each in accordance with ISO/IEC 19798

Capacity of starter toner is black 3,500 pages, and cyan, magenta, yellow is 2,500 pages each in accordance with ISO/IEC 19798

Maintenance Kit: MK-590 Installed every 200,000 pages

Options

PF-520 Paper Feeder: Max. 500 sheets; 60-163 g/m², A4, B5,A5, Letter, Legal, Custom (105 x 148 mm to 216 x 356 mm)

PF-530 Multi-Media Feeder: Max. 500 sheets; 60 - 220 g/m², A4,B5, A5, Letter, Legal, Custom (105 x 148 mm to 216 x 356 mm)

Max 2 x PF-520 or PF-530 feeders in any combination for a total of 1,300 sheet input

Memory upgrade

DIMM-1GBP: 1,024MB ^DIMM-1GBP required for activating RAM Disk

Card Authentication Kit

USB Card Reader (HID or Mifare) to access the device

External Keyboard

USB Keyboard for easy file naming and inputting device settings

CompactFlash®-Card

1 slot (up to 4 GB) for printing forms, fonts, logos, macro storage

USB Flash Memory

Supports direct printing of PDF, XPS, TIFF, JPEG files via USB Host Interface

Cabinet

Warranty

2-year warranty as standard. Kyocera guarantees the drums and developers for 2 years or maximum 200,000 pages (whichever occurs sooner), provided the MFP is used and cleaned in accordance with the service instructions.



FS-C2126MFP+ / FS-C2026MFP+

COLOUR MULTIFUNCTIONALS FOR A4 FORMAT

FS-C2126MFP+ / FS-C2026MFP+
A4 COLOUR MULTIFUNCTIONALS



THE A4 WORKGROUP MFP DELIVERING BRILLIANT COLOUR OUTPUT.

The FS-C2126MFP+ and FS-C2026MFP+ can print and copy up to a fast 26 pages per minute, while delivering a true out of the box solution, including standard network printing, copying, colour scanning and fax functionality. These highly efficient workgroup A4 colour multifunctional printers are ideally suited for workgroups demanding luscious colour output with first class productivity, outstanding features, at a low cost per page. Efficiency and reliability combine with a large number of standard functionalities to make these Colour MFP's perfect for your workgroup.

- ▶ Up to 26 pages per minute A4 in Colour and Mono
- ▶ Up to 9,600 x 600 dpi printing quality with Multi-Bit Technology
- ▶ Standard Print, Copy, Colour scan and Fax* functionality
- ▶ Standard Duplex Unit for double-sided printing
- ▶ Standard Network and USB Connectivity
- ▶ Standard Reverse Automatic Document Feeder (RADF)
- ▶ 250-Sheet Universal Cassette
- ▶ 50-Sheet Multi-Purpose Tray
- ▶ Direct PDF Print from USB Flash Memory Device
- ▶ Exceptionally low printing costs in its class



Printed on Nordset, an environmentally responsible paper manufactured using Elemental Chlorine Free (ECF) pulp sourced from third party certified, well managed forests. Produced by Nordland Papier, a company certified under ISO14001 environmental management systems and registered under the EU Eco-management and Audit Scheme EMAS (Reg. No.D - 162 - 00007).

*Kyocera does not warrant that any specifications mentioned will be error-free. Specifications are subject to change without notice. Information is correct at time of going to press. All other brand and product names may be registered trademarks or trademarks of their respective holders and are hereby acknowledged. Any reference to fax functionality is for the FS-C2126MFP+ only.

KYOCERA MITA Australia
Ph: 13 KYOCERA
www.kyoceramita.com.au

KYOCERA MITA New Zealand
Ph: 0508 KYOCERA
www.kyoceramita.co.nz



KYOCERA MITA Australia Pty Ltd ABN 77 003 852 444

FS-C2126MFP+ & FS-C2026MFP+: FAST, ROBUST, VIBRANT COLOUR OUTPUT

The Kyocera ECOSYS® FS-C2126MFP+ and FS-C2026MFP+ redefine A4 Colour Printing and Copying with superior performance, power, quality and ultra-reliability that your business demands. Offering a vast array of standard features and options to provide the flexibility to grow with your business demands, the FS-C2126MFP+ and FS-C2026MFP+ are designed with your workgroup in mind. Combined with Kyocera's unique long life technology and proven reliability, the exceptional product functionality and consistent colour image quality engineered in to these Colour MFPs, assures superior document handling every time. And with fast first print and copy times, and low-noise design, the FS-C2126MFP+ and FS-C2026MFP+ are out of the box Colour MFPs that delivers.

COLOUR NEVER LOOKED SO GOOD

The FS-C2126MFP+ and FS-C2026MFP+ bring the **WOW** factor to your business. Whether you want to persuade, present or just attract attention, adding colour will raise the bar on your documents, while helping to drive your company's message.

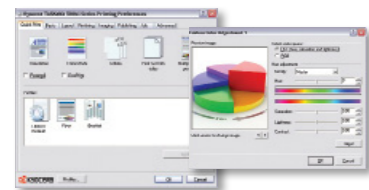
Powerful, intuitive and incredibly efficient, the **proven technology** engineered into every Kyocera Multifunctional Printer delivers brilliant, high-impact colour. In addition, an **intelligent colour calibration system** puts you in control, while ensuring consistent colour reproduction page after page. Colours are true, gradations are smooth, and shading is accurate.

The result? Vivid colour and crisp black & white documents that reflect your professionalism.



POWER AT THE DESKTOP

Kyocera's advanced KX Driver allows users to take full advantage of unique print features including the ability to save profiles for common jobs and advanced colour settings to maximize your output quality.



Easy to Use Control Panel

The user friendly control panel provides easy to use document handling and functionality at your finger tips.

Output Tray

Up to 250 sheets face down that delivers the size and flexibility for all your high volume printing needs.

Efficient Duplex

Standard duplex helps you reduce paper consumption by producing 2-sided originals on stock up to 163 g/m² from the paper trays.

Versatile Multi-Purpose Tray

A standard 50 sheet multi-purpose paper tray can handle mixed media types, from statement to ledger, and up to 220 g/m² for your special jobs.



Reverse Automatic Document Feeder (RADF)

Standard 50 sheet RADF can produce double sided copies and prints helping to reduce your paper consumption.

Advanced USB Host Interface

Conveniently print-from, and scan-to, any USB drive right from the control panel in PDF, JPEG, TIFF and XPS file formats.

Flexible Paper Handling

An innovative paper path design allows for a variety of paper weights through the trays, giving you the flexibility to satisfy virtually all your printing and copying needs.

SUPERIOR PRODUCTIVITY & DESIGN

- **Fast, Superior Colour Imaging for a Solid Impression.** At speeds up to 26ppm Colour and Black, combined with proven colour technology, the FS-C2126MFP+ & FS-C2026MFP+ brings brilliant colour to your output.
- **Micro-Particle Toner.** Kyocera's unique, micro-particle toner provides superior image quality in both colour and black & white. 7,000 pages Black, 5,000 pages CMY at ISO/IEC 19798.
- **Proven Technology & Ultra Reliability.** Kyocera's award-winning technology incorporates long life imaging components that can dramatically lower your total cost, while providing high productivity and exceptional image quality.
- **Ultimate Document Creation & Output Efficiency.** PRESCRIBE® offers your business a flexible, on-demand printing solution for forms, letterhead and similar corporate documents. PRESCRIBE eliminates the cost and storage space associated with preprinted forms.
- **Integrated Solutions.** Leverage the full potential of your printer with tools and utilities designed to maximize your security, management and accounting capabilities.

FLEXIBILITY TO GROW WITH YOUR BUSINESS DEMANDS



Optional 500 sheet paper feeder

- 60-163g/m²
- A4, B5, A5, Letter, Legal, Custom paper sizes



Optional 500 sheet multi-media paper feeder

- 60 - 220g/m²
- A4, B5, A5, Letter, Legal, Custom paper sizes



Optional USB Card Authentication Kit

- Swipe card login for authentication
- Prevent any misuse of these MFPs



Supports External USB Keyboard

- Smooth implementation of inputting device settings and file naming